

WHAT'S ON

LONDON 2020

LEISURE
CONNECT

Tickets to theatre & other city essentials

LONDON THEATRE AND ENTERTAINMENT

& JULIET

MUSICAL

This irreverent and fun-loving new musical asks: what if Juliet's famous ending was really just her beginning? What if she decided to choose her own fate? This is Juliet's story now! Soaring with pop anthems including ...Baby One More Time, Everybody (Backstreet's Back), Love Me Like You Do and Can't Feel My Face, & Juliet is a riotous blast of fun and glorious music.

SCHEDULE: Monday – Saturday. Dark Sunday.

VENUE: Shaftesbury Theatre, Shaftesbury Ave., WC2 Nearest Tube: Tottenham Ct Rd.



101 DALMATIANS

MUSICAL

Based on Dodie Smith's iconic story set in the heart of Regent's Park, this new musical is written by Zinnie Harris and Douglas Hodge. Timothy Sheader directs with puppetry created and directed by Toby Olié (Running Wild).

SCHEDULE: Tuesday – Sunday. Dark Monday.

From May 16 to June 21.

VENUE: Regent's Park Open Air Theatre, NW1

Nearest Tube: Baker Street



4000 MILES

PLAY

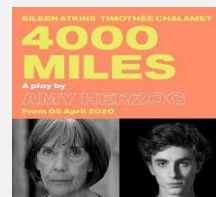
Matthew Warchus directs Eileen Atkins and Timothée Chalamet Amy Herzog's Pulitzer Prize-nominated Drama. At the beginning of the summer 21-year-old Leo set out from the West Coast cycling across America with his best friend, and turns up on his 91-year-old grandmother Vera's Manhattan doorstep in the middle of the night. His life just starting, hers nearly ended, in a faded Greenwich Village apartment their griefs collide.

SCHEDULE: Monday – Saturday. Dark Sunday.

From April 11 to May 22.

VENUE: Old Vic Theatre, The Cut, SE1

Nearest Tube: Waterloo



9 TO 5

MUSICAL

Tumble outta' bed and stumble to Dolly Parton's rip-roaring West End musical! Doralee, Violet and Judy are three workmates pushed to boiling point by their sexist and egotistical boss. Concocting a plan to kidnap and turn the tables on their despicable supervisor, will the girls manage to reform their office - or will events unravel when the CEO pays an unexpected visit?

SCHEDULE: Monday – Saturday. Dark Sunday.

Through May 23.

VENUE: Savoy Theatre, The Strand, WC2

Nearest Tube: Charing Cross



BABY REINDEER

PLAY

When award-winning comedian Richard Gadd offers a stranger a free cup of tea, he has no sense of the nightmare to come. One act of kindness. Six years of torment. The sell-out smash hit at Edinburgh Fringe, Baby Reindeer is the "blistering" debut play (Telegraph) from Richard Gadd (Netflix's 'Sex Education') is a chilling personal account of compulsion, delusion and obsession. Some admirers simply won't be shaken off.

SCHEDULE: Monday – Saturday. Dark Sunday.

From April 2 to May 2.

VENUE: Ambassadors Theatre, West Street, WC2

Nearest Tube: Leicester Square



BE MORE CHILL

MUSICAL

It's just your atypical love story – a guy (he wants to fit in), a girl (she wants to be noticed), and the supercomputer inside the guy's head that tells him what to do (it wants to take over the world!). An unprecedented international phenomenon, this original and hilarious show is both a relatable tale about how far we'll go for a little validation...and an otherworldly delight about a loveable geek and his very invasive (im)plant. What's not to love?

SCHEDULE: Tuesday – Sunday. Dark Monday.

Through May 3.

VENUE: The Other Palace, Palace Street, SW1E

Nearest Tube: Victoria



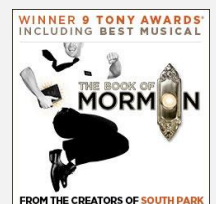
THE BOOK OF MORMON

MUSICAL

Winner of 4 Oliviers and 9 Tony Awards, including Best Musical! Vogue says "it's the funniest musical of all time." The New York Times says "it's the best musical of this century." It's the Broadway phenomenon from 'South Park' creators Trey Parker and Matt Stone and 'Avenue Q' co-creator Robert Lopez. Time Out New York calls it "musical comedy heaven."

SCHEDULE: Monday – Saturday. Dark Sunday.

VENUE: Prince of Wales Theatre, Coventry Street, W1 Nearest Tube: Piccadilly Circus



WHAT'S ON

LONDON 2020

LEISURE CONNECT

Tickets to theatre & other city essentials

CAROUSEL

MUSICAL

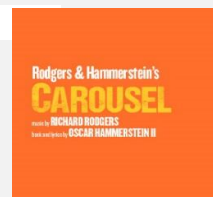
Celebrated for our innovative approach to classic musicals, rediscover Rodgers and Hammerstein's Carousel - featuring a score that includes 'If I Loved You' and 'You'll Never Walk Alone' - in the unique surroundings of Regent's Park Open Air Theatre.

SCHEDULE: Monday – Saturday. Dark Sunday.

From July 31 to September 19.

VENUE: Regent's Park Open Air Theatre, NW1

Nearest Tube: Baker Street



CITY OF ANGELS

MUSICAL

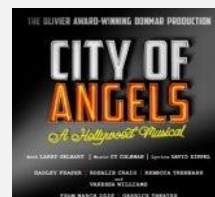
The Donmar Warehouse's production stars Rosalie Craig and Hadley Fraser alongside Rebecca Trehearn and, in her West End debut, Vanessa Williams. City of Angels blends the stories of a writer trying to turn his latest book into a screenplay, and the fictional world lifted from his novel. Set in 1940s Hollywood, the show sees most the actors double up to play characters in the 'real-life' storyline (which is played out in full colour), and the 'movie' story (which has a film noir feel).

SCHEDULE: Monday – Saturday. Dark Sunday.

From March 6 to September 5.

VENUE: Garrick Theatre, Charing Cross Rd., WC2

Nearest Tube: Leicester Square



COME FROM AWAY

MUSICAL

Winner! Four 2019 Olivier Awards, including Best New Musical! This joyous new musical shares the incredible real-life story of the 7,000 air passengers from all over the world grounded in Canada during the wake of 9/11, and the small community of Newfoundland that invited these 'come from aways' into their lives. As uneasiness turned into trust and music soared into the night, their stories became a celebration of hope, humanity and unity.

SCHEDULE: Monday – Saturday. Dark Sunday.

VENUE: Phoenix Theatre, Charing Cross Road, WC2H **Nearest Tube:** Charing Cross



THE COMEDY ABOUT A BANK ROBBERY

COMEDY

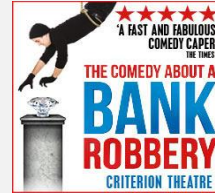
One giant diamond. Eight incompetent crooks. And a security guard asleep on the job. What could possibly go right? Written by and starring the Mischief Theatre Company (who brought you the 2015 Olivier award-winning Best New Comedy "The Play That Goes Wrong"), be entertained by their unique brand of humour in this hilarious new show. It would be criminal to miss it.

SCHEDULE: Tuesday – Sunday. Dark Monday.

Through May 3.

VENUE: Criterion Theatre, Piccadilly Circus, W1

Nearest Tube: Piccadilly Circus



CYRANO DE BERGERAC

PLAY

James McAvoy returns to the West End in an inventive new adaptation of Edmond Rostand's masterwork by Martin Crimp.

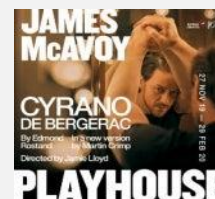
Fierce with a pen and notorious in combat, Cyrano almost has it all - if only he could win the heart of his true love. There's just one big problem: he has a nose as huge as his heart. Will a society engulfed by narcissism get the better of De Bergerac - or can his mastery of language set Roxane's world alight?

SCHEDULE: Monday – Saturday. Dark Sunday.

Through February 29.

VENUE: Playhouse Theatre, Northumberland, WC2N

Nearest Tube: Embankment



DEAR EVAN HANSEN

MUSICAL

A letter that was never meant to be seen, a lie that was never meant to be told, a life he never dreamed he could have. Evan Hansen is about to get the one thing he's always wanted: a chance to finally fit in. From the Tony®, Oscar and Golden Globe-winning songwriting team Benj Pasek and Justin Paul (The Greatest Showman, La La Land), DEAR EVAN HANSEN is a new musical about life and the way we live it.

SCHEDULE: Monday – Saturday. Dark Sunday.

VENUE: Noel Coward Theatre, St. Martin's Lane, WC2 **Nearest Tube:** Leicester Square



THE DOCTOR

PLAY

Juliet Stevenson stars in Robert Icke's blistering production of The Doctor, which received critical acclaim at the Almeida Theatre. Set in a London hospital, the play focuses on Professor Ruth Woolf, a senior physician who is treating a young patient with sepsis when a priest is sent by the girl's parents to deliver the last rites. This poses a huge moral dilemma for the doctor, which erupts into a national scandal.

SCHEDULE: Monday – Saturday. Dark Sunday.

From April 20 to July 11.

VENUE: Duke of York's Theatre, St. Martin's Ln, WC2

Nearest Tube: Piccadilly Circus



WHAT'S ON

LONDON 2020

LEISURE
CONNECT

Tickets to theatre & other city essentials

A DOLL'S HOUSE

Nora seems to have it all - a successful husband, adorable children and a beautiful home. But her acceptance of the status quo is about to undergo a profound change. Is this picture perfect life anything more than an act? And what happens if she is no longer willing to play her role? Jessica Chastain makes her West End debut as Nora in a radical new production by director Jamie Lloyd.

SCHEDULE: Monday – Saturday. Dark Sunday.

VENUE: Playhouse Theatre, Northumberland, WC2N

PLAY

From June 10 to September 5.

Nearest Tube: Embankment



DRAGONS AND MYTHICAL BEASTS

Calling all brave heroes! Enter into a magical world of myths and legends in this fantastical new interactive show for all the family. Unveil a myriad of dark secrets and come face to face with some of the most magnificent monsters and terrifying beasts ever to walk the earth. Discover the colossal Stone Troll, the mysterious Indrik and Japanese Baku; the Tooth Fairy (not as sweet as you'd think), an adorable Unicorn and majestic Griffin. Take your place among legendary heroes. Just don't wake

SCHEDULE: Friday – Wednesday. Dark Thursday.

VENUE: Regent's Park Open Air Theatre, NW1

EVENT

From August 11 to September 6.

Nearest Tube: Baker Street



THE DRIFTERS GIRL

The Queen of British Soul and West End leading lady Beverley Knight stars in the remarkable story of The Drifters, one of the world's greatest vocal groups, and the truth about the woman who made them. With an unbelievable soundtrack, including Save The Last Dance For Me, Under The Boardwalk, Kissin' In The Back Row Of The Movies, Stand By Me, Come On Over To My Place and Saturday Night At The Movies.

SCHEDULE: Monday – Saturday. Dark Sunday.

VENUE: Garrick Theatre, Charing Cross Rd., WC2

MUSICAL

From October 1.

Nearest Tube: Leicester Square



ENDGAME

Alan Cumming and Daniel Radcliffe star in Samuel Beckett's macabre comedy in which hope and cruelty are the last things to die. Interrupted only by the nostalgic musings of an old tyrant's ancient, dustbin-dwelling parents, this bleakly funny double act cling stubbornly to their routine of casual savagery and mutual dependence. Presented in a double bill with Beckett's Rough for Theatre II, performed by members of the company.

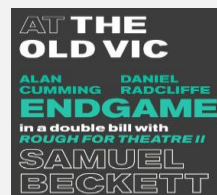
SCHEDULE: Monday – Saturday. Dark Sunday.

VENUE: Old Vic Theatre, The Cut, SE1

PLAY

Through March 28.

Nearest Tube: Waterloo



EVERYBODY'S TALKING ABOUT JAMIE

Jamie New is sixteen and lives on a council estate in Sheffield. Jamie doesn't quite fit in. Is terrified about the future. Is going to be a sensation. Supported by his brilliant loving mum and surrounded by his friends, Jamie overcomes prejudice, beats the bullies and steps out of the darkness, into the spotlight. Fearless, funny, fabulous - a coming-of-age story with a twist!

SCHEDULE: Monday – Saturday. Dark Sunday.

VENUE: Apollo Theatre, Shaftesbury Ave, W1D

MUSICAL

Nearest Tube: Piccadilly Circus



EVITA

"A turbocharged, transformative revival" (Daily Mail), Regent's Park Open Air Theatre's sell-out production of Evita comes to the Barbican for 8 weeks only. From a life of poverty to spiritual leader of the nation, Eva Perón was loved, hated, derided and venerated. Dividing the Argentinian people with her patriotic speeches, her ambition, glamour and magnetism established 'Evita' as the world's first major political celebrity.

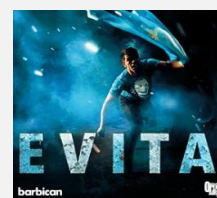
SCHEDULE: Monday – Saturday. Dark Sunday.

VENUE: Barbican Theatre, Silk Street, EC2

MUSICAL

From August 2 to August 22.

Nearest Tube: Barbican



THE GREAT GATSBY

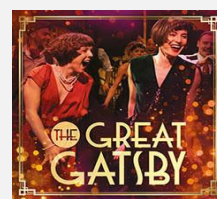
"The honour would be entirely mine if you would attend my little party." It's the roaring twenties – an era of bootleg liquor, red hot jazz and hedonistic pleasures. Jay Gatsby has invited you to one of his infamous parties and that's not an invite you want to turn down. Step into a heart-racing immersive adaptation of F Scott Fitzgerald's seminal jazz-age novel.

SCHEDULE: Wednesday – Sunday. Dark Monday – Tuesday.

VENUE: Gatsby's Mansion, Davies Street, W1K

EVENT

Nearest Tube: Bond Street



WHAT'S ON

LONDON 2020

LEISURE CONNECT

Tickets to theatre & other city essentials

HAIRSPRAY

MUSICAL

Don't miss Michael Ball reprising his Olivier Award-winning role as Edna Turnblad in Hairspray the Musical. Can she make it on the local TV dance show, win the heart of teen heartthrob Link Larkin and bring everyone together – whatever their colour, size or hairdo? Well if you want a change, you've really got to shake things up! This inspirational, fun-loving and fabulously uplifting musical sensation is back and bigger than ever.

SCHEDULE: Tuesday – Sunday. Dark Monday.

From April 23 to August 29.

VENUE: London Coliseum, St. Martin's Lane, WC2N

Nearest Tube: Leicester Square



HAMILTON

MUSICAL

Winner of 11 Tony Awards including Best Musical, it is the story of America's Founding Father Alexander Hamilton, an immigrant from the West Indies who became George Washington's right-hand man during the Revolutionary War and helped shape the very foundations of the America we know today. The score blends hip-hop, jazz, blues, rap, R&B and Broadway - the story of America then, as told by America now.

SCHEDULE: Monday – Saturday. Dark Sunday.

Limited availability, please inquire.

VENUE: Victoria Palace Theatre, Victoria Street, SW1E

Nearest Tube: Victoria



HELLO, DOLLY!

MUSICAL

Imelda Staunton is back where she belongs - in this brand new production of one of the most iconic musicals of all time.

Meddlesome socialite turned matchmaker Dolly Levi travels to Yonkers, New York to find a match for the miserly, unmarried 'half-a-millionaire' Horace Vandergelder, but everything changes when she decides that the next match she needs to make is for herself.

SCHEDULE: Tuesday – Saturday. Dark Sunday – Monday.

From August 11.

VENUE: Adelphi Theatre, Strand, WC2R

Nearest Tube: Covent Garden



JOSEPH AND THE AMAZING TECHNICOLOR DREAMCOAT

MUSICAL

The new, smash hit production of Joseph returns to the iconic London Palladium, following its triumphant season this year.

Joseph enjoyed a completely sold out season this year, with audiences giving the new production nightly standing ovations.

Critics were also unanimous in their acclaim for the legendary musical - the first major collaboration by Andrew Lloyd Webber and Tim Rice – as it returned to the London Palladium.

SCHEDULE: Monday – Saturday. Dark Sunday.

From July 2 to September 6.

VENUE: London Palladium, Argyll Street, W1F

Nearest Tube: Oxford Circus



KUNENE AND THE KING

PLAY

South Africa, 2019. Twenty-five years since the first post-apartheid democratic elections, two men from contrasting walks of life are thrust together to reflect on a quarter century of change. Jack Morris has seemingly little in common with his at-home nurse Lunga Kunene, but the two men soon discover their shared passion for Shakespeare, which ignites this 'rich, raw and shattering head-to-head' (The Times).

SCHEDULE: Monday – Saturday. Dark Sunday.

Through March 28.

VENUE: Ambassadors Theatre, West Street, WC2

Nearest Tube: Leicester Square



LEOPOLDSTADT

PLAY

Vienna in 1900 was the most vibrant city in Europe, humming with artistic and intellectual excitement and a genius for enjoying life. A tenth of the population were Jews. A generation earlier they had been granted full civil rights by the Emperor, Franz Josef. It was not to last, and millions rediscovered what it means to be Jewish in the first half of the 20th century. Tom Stoppard's passionate drama of love, family and endurance.

SCHEDULE: Monday – Saturday. Dark Sunday.

Through May 16.

VENUE: Wyndham's Theatre, Charing Cross Rd, WC2H

Nearest Tube: Leicester Square



LES MISÉRABLES

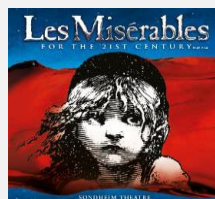
MUSICAL

Cameron Mackintosh's acclaimed brilliant new staging of Boublil and Schönberg's classic musical has taken the world by storm and has been hailed "Les Mis for the 21st Century". The magnificent score of Les Misérables includes I Dreamed a Dream, On My Own, Bring Him Home, One Day More, Master Of The House and many more. Storm the barricades for a ticket to one of the world's most popular musicals.

SCHEDULE: Monday – Saturday. Dark Sunday.

VENUE: Sondheim Theatre, Shaftesbury Avenue, W1

Nearest Tube: Piccadilly Circus



WHAT'S ON

LONDON 2020

LEISURE CONNECT

Tickets to theatre & other city essentials

LIFE OF PI

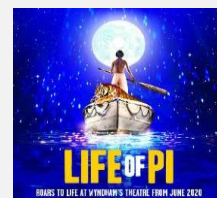
After a cargo ship sinks in the middle of the vast Pacific Ocean, there are five survivors stranded on a lifeboat - a hyena, a zebra, an orangutan, a Royal Bengal tiger, and a sixteen year-old boy named Pi. Time is against them, nature is harsh, who will survive? Based on one of the most extraordinary and best-loved works of fiction, this smash hit adaptation of an epic journey of endurance and hope features breath-taking puppetry and state-of-the-art visuals.

SCHEDULE: Wednesday – Monday. Dark Tuesday.

From July 9 to October 4.

VENUE: Wyndham's Theatre, Charing Cross Rd, WC2H Nearest Tube: Leicester Square

PLAY



THE LION KING

Set against the majesty of the Serengeti Plains and to the evocative rhythms of Africa, Disney's beloved film has been transformed into a spectacular theatrical experience that explodes with glorious colours, stunning effects and enchanting music. At its heart is the powerful and moving story of Simba, and his epic journey from wide-eyed cub to his destined role as the King of the Pridelands.

SCHEDULE: Tuesday – Sunday. Dark Monday.

VENUE: Lyceum Theatre, Wellington Street, WC2 Nearest Tube: Covent Garden

MUSICAL



LOCAL HERO

Ambitious Texan oil executive Mac MacIntyre arrives in Scotland on a mission to buy a small seaside village and replace it with a refinery. It's the deal of a lifetime, but Mac soon finds that putting a price on this beautiful spot is more complicated than he bargained for. Before the locals get rich, they must decide what their home is worth. Adapted from the film with music and songs by Mark Knopfler.

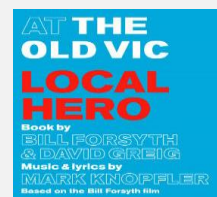
SCHEDULE: Monday – Saturday. Dark Sunday.

From June 18 to September 5.

VENUE: Old Vic Theatre, The Cut, SE1

Nearest Tube: Waterloo

MUSICAL



MAGIC MIKE LIVE!

The Channing Tatum crafted, 360-degree dance and acrobatic spectacular is made for a woman's gaze but directed at a woman's heart. Equal parts empowering and exhilarating, whether you're looking for the perfect date night or an unforgettable girls night out, don't miss the show that the Metro called "Red-hot magic!" and The Sun calls, "... the sexiest, steamiest show in town!"

SCHEDULE: Tuesday – Sunday. Dark Monday.

VENUE: The Theatre at Hippodrome Casino, WC2H

Nearest Tube: Leicester Square

EVENT



MAGIC GOES WRONG

The creators of The Play That Goes Wrong and The Comedy About A Bank Robbery have collaborated with Penn & Teller, whose successful double act has seen rise to become one of the world's biggest magic acts selling out venues in London and the US. It is the next 'Goes Wrong' comedy in the West End after Peter Pan Goes Wrong and The Play That Goes Wrong!

SCHEDULE: Monday – Saturday. Dark Sunday.

Through March 15.

VENUE: Vaudeville Theatre, Strand, WC2R

Nearest Tube: Charing Cross

COMEDY



MAMMA MIA!

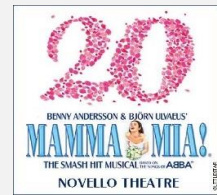
Join the fun as the world's favourite feel-good musical celebrates its twentieth anniversary in London's West End. Since premiering there in 1999, the irresistible smash-hit has become a global phenomenon that's captured the hearts of millions around the globe. It's the sunny, funny tale of a mother, a daughter and three possible dads on a Greek island idyll, unfolding to the magic of ABBA's timeless pop masterpieces.

SCHEDULE: Monday – Saturday. Dark Sunday.

VENUE: Novello Theatre, Aldwych, WC2

Nearest Tube: Covent Garden

MUSICAL



MAMMA MIA! THE PARTY

You've seen the musical. You've watched the films. Now you can experience MAMMA MIA! THE PARTY. Meet taverna owner Nikos and his family as their story unfolds in a glorious night of song, dance and celebration. Featuring your favourite ABBA songs performed by actors and musicians all around you, soak up the island atmosphere and feast on mouth-watering Mediterranean food & drink!

SCHEDULE: Wednesday – Monday. Dark Tuesday.

VENUE: The O2, Peninsula Square, SE10

Nearest Tube: North Greenwich

EVENT



WHAT'S ON

LONDON 2020

LEISURE CONNECT

Tickets to theatre & other city essentials

MARY POPPINS

MUSICAL

The multi award-winning musical returns to the West End this October! With a fantastic score that includes Supercalifragilisticexpialidocious, A Spoonful of Sugar, Let's Go Fly a Kite and Feed The Birds, the magical story has been triumphantly and spectacularly brought to the stage with dazzling choreography, incredible effects and unforgettable songs.

SCHEDULE: Monday – Saturday. Dark Sunday.

VENUE: Prince Edward Theatre, Old Compton St, W1 Nearest Tube: Leicester Square



MATILDA THE MUSICAL

MUSICAL

Matilda The Musical is the multi-award winning musical from the Royal Shakespeare Company, inspired by the beloved book by the incomparable Roald Dahl. With book by Dennis Kelly and original songs by Tim Minchin, Matilda The Musical tells the tale of an extraordinary girl who is determined to change her own story, even if it means being a little bit naughty...

SCHEDULE: Tuesday – Sunday. Dark Monday.

VENUE: Cambridge Theatre, Earlham Street, WC2H Nearest Tube: Covent Garden



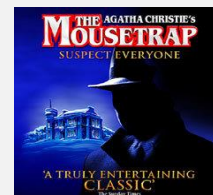
THE MOUSETRAP

PLAY

Agatha Christie's legendary production has kept audiences guessing for over six decades. A group of people at a country guest house in Monkswell Manor. Cut off by the snow, they discover there is a murderer in their midst. Who can it be? One by one the suspicious characters reveal their sordid pasts until at the last, nerve-shredding moment the identity and the motive are finally revealed...

SCHEDULE: Monday – Saturday. Dark Sunday.

VENUE: St Martin's Theatre, West Street, WC2 Nearest Tube: Leicester Square



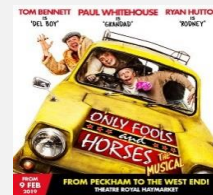
ONLY FOOLS AND HORSES

MUSICAL

The landmark, record-breaking and top-rated television series, written by the late, great John Sullivan, holds a special place in the hearts of the British public. Now John's son has teamed up with comedy giant Paul Whitehouse to write and produce a script and score to honour his father's legacy; recreating the iconic series into a brand-new, home-grown British Musical spectacular. Lovely Jubbly!

SCHEDULE: Monday – Saturday. Dark Sunday.

VENUE: Theatre Royal Haymarket, Haymarket, SW1Y Nearest Tube: Piccadilly Circus



THE PHANTOM OF THE OPERA

MUSICAL

Far beneath the majesty and splendour of the Paris Opera House, the love the Phantom holds for his beautiful protégée Christine Daaé is so strong that even her heart cannot resist. Andrew Lloyd Webber's mesmerising and unforgettable score, and the jaw-dropping scenery and breathtaking special effects, magically bring to life the legendary love story.

SCHEDULE: Monday – Saturday. Dark Sunday.

VENUE: Her Majesty's Theatre, Haymarket, SW1Y Nearest Tube: Piccadilly Circus



THE PLAY THAT GOES WRONG

COMEDY

This 2015 Olivier Award Winner for Best New Comedy is guaranteed to leave you aching with laughter! The Cornley Polytechnic Drama Society are putting on a 1920s murder mystery, but as the title suggests, everything that can go wrong... does! The accident-prone thespians battle against all odds to make it through to their final curtain call, with hilarious consequences!

SCHEDULE: Monday – Saturday. Dark Sunday.

VENUE: Duchess Theatre, Catherine Street, WC2 Nearest Tube: Covent Garden



PRETTY WOMAN: THE MUSICAL

MUSICAL

One of Hollywood's most beloved romantic stories of all time is now coming to the West End! Experience the moments you love from the movie — and get to know these iconic characters in a whole new way — in this dazzlingly theatrical take on a love story for the ages. Featuring an original score by Grammy® winner Bryan Adams ("Summer of '69," "Everything I Do").

SCHEDULE: Monday – Saturday. Dark Sunday.

VENUE: Piccadilly Theatre, Denman Street, W1 Nearest Tube: Piccadilly Circus



WHAT'S ON

LONDON 2020

LEISURE CONNECT

Tickets to theatre & other city essentials

THE PRINCE OF EGYPT

MUSICAL

The DreamWorks animated motion picture is now a new stage musical, featuring music and lyrics by Stephen Schwartz. It will feature 10 brand new songs plus the hit from the film, including Whitney Houston and Mariah Carey's hit "When You Believe." It tells the story of Moses, who was born a child of Israel, and brought up in Egypt after he was found by Pharaoh's wife in a wicker basket floating on the Nile.

SCHEDULE: Monday – Saturday. Dark Sunday.

VENUE: Dominion Theatre, Tottenham Court Rd, W1P Nearest Tube: Tottenham Court Rd



ROMEO & JULIET

PLAY

Kimberley Sykes directs Shakespeare's timeless story of two young people torn apart by a divided society and forbidden love.

SCHEDULE: Monday – Saturday. Dark Sunday.

VENUE: Regent's Park Open Air Theatre, NW1

From June 27 to July 25.

Nearest Tube: Baker Street



SCHOOL OF ROCK

MUSICAL

School of Rock, the hit Broadway musical from Andrew Lloyd Webber, is now rocking the West End! Dewey Finn, a failed, wannabe rock star, decides to earn an extra bit of cash by posing as a supply teacher at a prestigious prep school. There he turns a class of straight-A pupils into a guitar-shredding, bass-slapping, mind-blowing rock band. School of Rock is a musical treat for all ages!

SCHEDULE: Wednesday – Monday. Dark Tuesday.

VENUE: Gillian Lynne Theatre, Drury Lane, WC2

Through March 1.

Nearest Tube: Holborn / Covent Garden



THE SEAGULL

PLAY

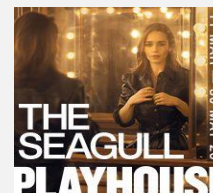
Emilia Clarke makes her West End debut in this unique modernisation of Anton Chekhov's The Seagull, with direction by Jamie Lloyd. A young woman is desperate for fame and a way out. A young man is pining after the woman of his dreams. A successful writer longs for a sense of achievement. An actress wants to fight the changing of the times. In an isolated home in the countryside where dreams are in tatters, hopes dashed, hearts broken and there is nowhere left to turn, the only option is to

SCHEDULE: Tuesday – Saturday. Dark Sun-Mon.

VENUE: Playhouse Theatre, Northumberland, WC2N

From March 11 to May 30.

Nearest Tube: Embankment



SHOOK

PLAY

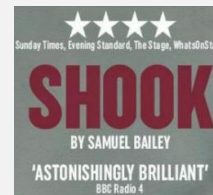
Instead of GCSEs, Cain, Riyad and Jonjo got sentences. Locked up in a young offenders' institution, they trade sweets, chat shit, kill time - and await fatherhood. Grace's job is to turn these teenagers into parents, but can they grow up quickly enough to escape the system? Winner of the 2019 Papatango New Writing Prize from 1,406 entries, Shook tenderly and honestly examines the young men society shuts away.

SCHEDULE: Monday – Saturday. Dark Sunday.

VENUE: Trafalgar Studios, Whitehall, SW1

From April 8 to May 9.

Nearest Tube: Charing Cross



SISTER ACT: THE MUSICAL

MUSICAL

Whoopi Goldberg is back as Deloris Van Cartier with Jennifer Saunders in the role of Mother Superior as Sister Act The Musical comes to London for just 39 performances in Summer 2020. Based on the iconic movie, this sparkling tribute to the universal power of friendship, sisterhood and music features original music by Alan Menken, dazzling dance routines and songs inspired by Motown, soul and disco. It's gonna be fabulous baby!

SCHEDULE: Tuesday – Sunday. Dark Monday.

VENUE: Eventim Apollo, Caroline St, W6

From July 29 to August 30.

Nearest Tube: Hammersmith



SIX THE MUSICAL

MUSICAL

From Tudor Queens to Pop Princesses, the six wives of Henry VIII take to the mic to tell their tales, remixing five hundred years of historical heartbreak into a 75-minute celebration of 21st century girl power. These Queens may have green sleeves but their lipstick is rebellious red. A homegrown histo-remixed pop-concert musical by Toby Marlow and Lucy Moss!

SCHEDULE: Tuesday – Sunday. Dark Monday.

VENUE: Arts Theatre, 6-7 Great Newport St, WC2H

Nearest Tube: Leicester Square



WHAT'S ON

LONDON 2020

LEISURE
CONNECT

Tickets to theatre & other city essentials

SUNDAY IN THE PARK WITH GEORGE

MUSICAL

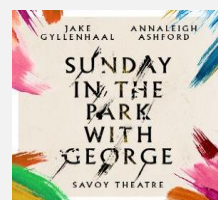
Sondheim and Lapine's masterpiece follows painter Georges Seurat (Jake Gyllenhaal) in the months leading up to the completion of his most famous painting. Consumed by his need to "finish the hat," Seurat alienates the French bourgeoisie, and neglects his lover Dot (Annaleigh Ashford), not realizing that his actions will reverberate over the next 100 years. Destined to be the theatrical event of 2020, previously dazzling Broadway audiences and critics.

SCHEDULE: Monday – Saturday. Dark Sunday.

From June 11 to September 5.

VENUE: Savoy Theatre, The Strand, WC2

Nearest Tube: Charing Cross



A TASTE OF HONEY

PLAY

When her mother Helen runs off with a car salesman, feisty teenager Jo takes up with Jimmy, a sailor who promises to marry her, before he heads for the seas. Art student Geoff moves in and assumes the role of a surrogate parent until, misguided, he sends for Helen and their unconventional setup unravels. Bijan Sheibani directs one of the great taboo-breaking plays of the 1950s, offering an explosive celebration of the vulnerabilities and strengths of the female spirit in a deprived and restless

SCHEDULE: Monday – Saturday. Dark Sunday.

Through February 29.

VENUE: Trafalgar Studios, Whitehall, SW1

Nearest Tube: Charing Cross



THRILLER - LIVE

MUSICAL

The wonderful career of the world's greatest entertainer - Michael Jackson - is celebrated like never before, with this amazing show, featuring a full company of singers, dancers and live band. Boogie on down as the cast belts out song after song from the early Motown and Jackson 5 days right up to the solo successes with dance sequences that are simply breath-taking.

SCHEDULE: Tuesday – Sunday. Dark Monday.

Through April 26.

VENUE: Lyric Theatre, Shaftesbury Avenue, W1

Nearest Tube: Piccadilly Circus



TINA - THE TINA TURNER MUSICAL

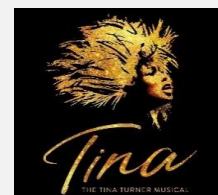
MUSICAL

From humble beginnings in Nutbush, Tennessee, to her transformation into the global Queen of Rock 'n' Roll, Tina Turner (Adrienne Warren) didn't just break the rules, she rewrote them. This new stage musical featuring her much-loved songs, reveals the untold story of a woman who dared to defy the bounds of her age, gender and race.

SCHEDULE: Monday – Saturday. Dark Sunday.

Nearest Tube: Drury Lane

VENUE: Aldwych Theatre, Aldwych, WC2B 4DF



TO KILL A MOCKINGBIRD

PLAY

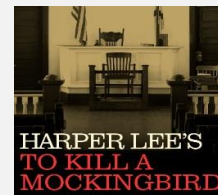
Rhys Ifans star as Atticus Finch in the West End transfer of To Kill A Mockingbird, Aaron Sorkin's new play based on Harper Lee's Pulitzer Prize-winning novel. Set in Alabama in 1934, the story centered on one of the most venerated characters in American literature, the small-town lawyer Atticus Finch, has not played to an empty seat and holds the benchmark of having become the most successful American play in Broadway history.

SCHEDULE: Monday – Saturday. Dark Sunday.

From May 21.

VENUE: Gielgud Theatre, Shaftesbury Road, W1D

Nearest Tube: Piccadilly Circus



TOUCHING THE VOID

PLAY

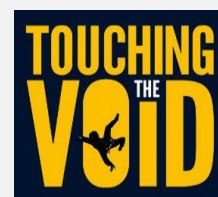
Based on Joe Simpson's best-selling memoir, turned BAFTA-winning film, this extraordinary story charts Joe Simpson's and Simon Yates' struggle for survival on the perilous Siula Grande mountain in the Peruvian Andes. Life-affirming and often darkly funny, David Greig's thrilling adaptation takes the audience on an epic adventure that asks how far you'd be willing to go to survive.

SCHEDULE: Monday – Saturday. Dark Sunday.

Through February 29.

VENUE: Duke of York's Theatre, St. Martin's Ln, WC2

Nearest Tube: Piccadilly Circus



UNCLE VANYA

PLAY

In the heat of summer, Sonya and her Uncle Vanya (Toby Jones) while away their days on a crumbling estate deep in the countryside, visited occasionally only by the local doctor Astrov (Richard Armitage). However, when Sonya's father suddenly returns with his beautiful new wife declaring that he intends to sell the house, the polite facades crumble and repressed feelings start to emerge with devastating consequences.

SCHEDULE: Tuesday – Sunday. Dark Monday.

Through May 2.

VENUE: Harold Pinter Theatre, Panton Street, SW1Y

Nearest Tube: Piccadilly Circus



WHAT'S ON

LONDON 2020

LEISURE
CONNECT

Tickets to theatre & other city essentials

UPSTART CROW

David Mitchell makes his West End debut in Ben Elton's stage adaptation of the critically acclaimed BBC sitcom. This all-new comedy - written especially for the stage - will see Mitchell once more don the bald wig and bardish coddling pouch in his iconic characterisation of Will Shakespeare, directed by Olivier award-winner Sean Foley (The Ladykillers, Jeeves and Wooster and The Miser).

SCHEDULE: Monday – Saturday. Dark Sunday.

VENUE: Gielgud Theatre, Shaftesbury Road, W1D

COMEDY

Through April 25.

Nearest Tube: Piccadilly Circus



WAITRESS

The irresistible hit features original music by Grammy® nominee Sara Bareilles comes to London! Jenna, a waitress and expert pie maker who dreams of a way out of her small town and loveless marriage. A baking contest and the town's new doctor may offer her a chance at a fresh start, but Jenna must summon the strength and courage to rebuild her own life.

SCHEDULE: Monday – Saturday. Dark Sunday.

VENUE: Adelphi Theatre, Strand, WC2R

MUSICAL

Through July 4.

Nearest Tube: Covent Garden



THE WATSONS

Emma Watson's been cut off by her wealthy aunt. She needs to marry, and fast, or be faced with a life of poverty and spinsterhood. Luckily, she has plenty of prospective suitors asking to dance... So far, so familiar, but that's when Jane Austen stopped writing. Two hundred years on, Olivier-winner Laura Wade's ingenious and triumphant new comedy pops the bonnet on Jane Austen's world and asks: what happens when a writer loses the plot and fictional characters take control of their tale?

SCHEDULE: Tuesday – Sunday. Dark Monday.

VENUE: Harold Pinter Theatre, Panton Street, SW1Y

COMEDY

From May 8 to September 26.

Nearest Tube: Piccadilly Circus



WICKED

Based on the acclaimed novel that ingeniously re-imagined the stories and characters in 'The Wonderful Wizard of Oz', Wicked tells the incredible untold story of an unlikely but profound friendship between two sorcery students. Their extraordinary adventures in Oz will ultimately see them fulfil their destinies as Glinda The Good and the Wicked Witch of the West.

SCHEDULE: Monday – Saturday. Dark Sunday.

VENUE: Apollo Victoria Theatre, Wilton Road, SW1

Nearest Tube: Victoria

MUSICAL



WITNESS FOR THE PROSECUTION

Step inside the magnificent surroundings of The Chamber at London County Hall and experience the intensity and drama of Agatha Christie's gripping story of justice, passion and betrayal in a unique courtroom setting. Leonard Vole is accused of murdering a widow to inherit her wealth. Don't miss this landmark stage production on London's Southbank. See you in court.

SCHEDULE: Tuesday – Sunday. Dark Monday.

VENUE: London Country Hall, Belvedere Road, SE1

Nearest Tube: Waterloo

PLAY



THE WOMAN IN BLACK

Since 1989, millions of theatregoers have lived to tell the tale of one of the most exciting, spooky, gripping and successful theatre events ever staged. The Woman In Black is a gripping theatrical exploration of terror, 'a masterpiece' (The Guardian) that's been thrilling audiences of all ages with its unique blend of suspense, drama and bold stagecraft.

SCHEDULE: Tuesday – Saturday. Dark Sunday.

VENUE: Fortune Theatre, Russell Street, WC2

Nearest Tube: Covent Garden

PLAY



WHAT'S ON

LONDON 2020

LEISURE
CONNECT

Tickets to theatre & other city essentials

ATTRACTIONS, SIGHTSEEING TOURS, AND OTHER UK ESSENTIALS

BRITISH MUSEUM VIP PRIVATE ACCESS TOUR

Experience the British Museum in a unique light as this special VIP tour allows for a truly rare experience; alone time with one of the most famous objects in the British Museum - the Rosetta Stone. In fact, your guide holds the key to the room housing some of the museum's most iconic pieces, and it will be opened just for you, before the crowds get a chance to make their way inside.

SCHEDULE: Duration 2 hr 45 min. Departures Fri, Sun.

VENUE: British Museum, Great Russell St, WC1B **Nearest Tube:** Tottenham Court Road



CHURCHILL WAR ROOMS

The original Cabinet War Rooms - today part of the Churchill War Rooms - sheltered the people at the heart of Britain's wartime government during the Blitz. Immerse yourself in this fascinating piece of living history in the underground maze of historic rooms that once buzzed with round-the-clock planning and plotting, strategies and secrets.

SCHEDULE: Open daily with some exceptions.

VENUE: Clive Steps, King Charles Street, SW1A **Nearest Tube:** Westminster



HAMPTON COURT PALACE

Hampton Court has grown from humble beginnings in the 11th century to one of the finest palaces in the world. Over 800 years of history can be explored through an introductory exhibition, a guide through Tudor kitchens, a costume guide tour, the Queen's state apartments, the King's apartments, and the most impressive Great Hall, England's last and greatest medieval hall.

SCHEDULE: Open daily with some exceptions.

VENUE: East Molesey, Surrey, KT8. **Nearest Rail:** Hampton Court Palace



JACK THE RIPPER COACH AND WALKING TOUR

Travel back in time on a vintage open top double-decker bus, and walk through an empty Smithfield market, home to the cock-lane Ghost. Then retrace the murder sites of Jack the Ripper, before heading to the safety of the Sherlock Holmes pub.

SCHEDULE: Duration 3 hours. Departures daily, except Tuesday and Thursday.

DEPARTS: Premium Tours, Victoria Coach Station, SW1V **Nearest Tube:** Victoria



KENSINGTON PALACE

Enjoy a wide range of daytime and evening events, including four redesigned visitor routes revealing both the secret and public lives of Kensington's inhabitants; a glamorous exhibition featuring rare and exquisite dresses from HM Queen Elizabeth II, Princess Margaret and Diana; the magnificent King's State Apartments; the Palace Gardens; and much more.

SCHEDULE: Open daily with some exceptions.

VENUE: Kensington Gardens, London, W8. **Nearest Tube:** High Street Kensington



LEEDS CASTLE, CANTERBURY, DOVER & GREENWICH TOUR

See Leeds Castle before it opens to the public with a unique guided tour, described as the "loveliest castle in the world", exploring the chapel, galleries, courtyards and banqueting hall. Then a scenic coastal drive to the white cliffs of Dover; Canterbury and its Cathedral; a drive through Greenwich and a cruise on the River Thames!

SCHEDULE: Duration 9 hours. Departures Mon, Tue, Wed, Fri, Sat.

DEPARTS: Premium Tours, Victoria Coach Station, SW1V **Nearest Tube:** Victoria



THE LONDON EYE

Loved by Britons and tourists alike, the London Eye is the world's tallest cantilevered observation wheel, over 40 stories high, with miles of panoramic views on a clear day. The gradual flight in one of 32 high-tech glass capsules takes approximately 30 minutes and offers spectacular views of London and its famous landmarks such as Big Ben and St Paul's Cathedral.

SCHEDULE: Open daily except Christmas Day and some exceptions.

VENUE: Westminster Bridge Rd, London SE1. **Nearest Tube:** Waterloo or Westminster



WHAT'S ON

LONDON 2020

LEISURE
CONNECT

Tickets to theatre & other city essentials

LONDON IN A DAY INC. TOWER OF LONDON & WESTMINSTER ABBEY

Immerse yourself in the quintessential sites on this comprehensive tour by foot and scenic river cruise that includes more entrance tickets than any other London in a Day tour, including Westminster Abbey, Tower of London and Tower Bridge. You'll also see not just one but two Changing of The Guards, from the very best vantage points

SCHEDULE: Approximately 8 hours. Departures Monday, Fridays, Saturdays March to October.

DEPARTS: Churchill Statue, Parliament Sq, SW1P 3JX Nearest Tube: Westminster



MAGIC OF LONDON FULL-DAY TOUR WITH CREAM TEA AT HARRODS

One of our best selling London tours, it's a day tour with professional guide, and includes being the first group inside St Paul's Cathedral, followed by Changing of the Guard at Buckingham Palace, Tower of London with ample time to view the Crown Jewels, an exclusive guided river cruise on the Thames, ending with Cream Tea at Harrods!

SCHEDULE: Duration 9.5 hours. Departures daily.

DEPARTS: Premium Tours, Victoria Coach Station, SW1V Nearest Tube: Victoria



ORIGINAL LONDON HOP-ON HOP-OFF SIGHTSEEING TOUR

The essential introduction to London for more than 65 years! With over 80 stops on 3 main sightseeing routes, free walking tours and free Hop-On Hop-Off Thames River Cruise Pass, this really is the finest way to see London and her landmarks. Sit back, relax and take in the sights, sounds and iconic views of the city, both ancient and modern. 24 or 48 hours options available.

SCHEDULE: Available daily except Christmas Day.

VENUE: 48 Buckingham Palace Road, London, SW1W Nearest Tube: Victoria



OXFORD, STRATFORD, WARWICK CASTLE & COTSWOLDS TOUR

At Warwick Castle, the greatest medieval castle in Britain, enter over the footbridge and explore the castles ramparts, towers and gardens. In charming Stratford-Upon-Avon, you'll explore the birthplace of William Shakespeare. Lunch in a 15th century inn in the picturesque Cotswolds (food/drink not included). Oxford, the city of dreaming spires, boasts one of the worlds greatest - and oldest - universities. Enjoy a unique, all-access tour, before heading to the colleges spectacular dining hall,

SCHEDULE: Duration 11 hours. Departures daily.

DEPARTS: Premium Tours, Victoria Coach Station, SW1V Nearest Tube: Victoria



TOWER OF LONDON

In the early 1080s, William the Conqueror began to build a massive stone tower at the centre of his London fortress. Take a guided tour with one of the Yeoman Warders around one of the most famous fortified buildings in the world and discover its 900 year history as a royal palace and fortress, prison and place of execution, mint, arsenal, menagerie and jewel house.

SCHEDULE: Open daily except 24-26 December and 1 January.

VENUE: Tower Hill, London EC3N.

Nearest Tube: Tower Hill



TOWER OF LONDON COMPLETE GUIDED TOUR

Take a fully guided tour of one of the most spectacular medieval castles on this VIP visit to the Tower of London. With skip the line, early entrance, you'll get to watch the famous Opening Ceremony before being among the first into the Jewel House to see the Crown Jewels. Then you'll tour the very best parts of the tower and learn the pivotal roles they played in the bloody history of the United Kingdom.

SCHEDULE: Open daily except 24-26 December and 1 January.

VENUE: Tower Hill, London EC3N.

Nearest Tube: Tower Hill



TOTAL LONDON FULL DAY TOUR WITH THE LONDON EYE

A complete full day tour - be the first group inside St Paul's with professional guide exclusive to Premium Tours. Plus: enjoy a cruise on the Thames; a visit to the Tower of London; a panoramic drive seeing the icons of London like Westminster Abbey and Houses of Parliament; viewing the Changing of the Guard (subject to availability); and a flight on the London Eye!

SCHEDULE: Duration 8.5 hours. Departures daily.

DEPARTS: Premium Tours, Victoria Coach Station, SW1V Nearest Tube: Victoria



WHAT'S ON

LONDON 2020

LEISURE
CONNECT

Tickets to theatre & other city essentials

THE VIEW FROM THE SHARD

The Shard is an iconic, landmark building on the London skyline, is the tallest building in Western Europe. The View is situated at the top of The Shard, on floors 68, 69 and 72, and almost twice the height of any other viewing platform in London. 800ft into the skies above London, you'll experience an astonishing 360 degree, 40 mile view over the city and beyond unfurled beneath you.

SCHEDULE: Open Daily.

VENUE: The Shard, Joiner Street, London SE1.

Nearest Tube: London Bridge



WARNER BROS. STUDIO TOUR LONDON

An amazing new opportunity to explore the magic of the Harry Potter™ films – the most successful film series of all time. From breathtakingly detailed sets to stunning costumes, props and animatronics, explore a unique showcase of the extraordinary British artistry, technology and talent that went into making the most successful film series of all time.

SCHEDULE: Available daily except Christmas Day and Boxing Day.

DEPARTS: Premium Tours, Victoria Coach Station, SW1V **Nearest Tube:** Victoria



WELCOME TO LONDON TOUR

A complete full day London tour with an expert guide. There is no better way to see all the sight and sounds of London, be the first group inside St Paul's cathedral with a professional guide followed by an afternoon visit to The Tower of London! Plus: enjoy a cruise on the Thames and viewing the Changing of the Guard (subject to availability)!

SCHEDULE: Duration 8 hours. Departures daily.

DEPARTS: Premium Tours, Victoria Coach Station, SW1V **Nearest Tube:** Victoria



WINDSOR CASTLE & BUCKINGHAM PALACE

The perfect Royal tour - visit two official residences of the Queen! Enjoy an extended visit to Windsor Castle in the morning. Then explore the state apartments and gardens at Buckingham Palace in the afternoon!

SCHEDULE: Duration 7.5 hours. Departures Mon, Thu, Sat July 23 - September 30.

DEPARTS: Premium Tours, Victoria Coach Station, SW1 **Nearest Tube:** Victoria



WINDSOR CASTLE MORNING TOUR

From William the Conqueror all the way through to our current Queen, successive monarchs have lived here and left their mark on what is now the largest continuously occupied castle in the world. See for yourself the splendour of St. Georges Chapel and the sumptuous state apartments. Explore Windsor itself, a pretty town full of shops and historic pubs.

SCHEDULE: Duration 5 hours. Departures Mon, Thu, Sat.

DEPARTS: Premium Tours, Victoria Coach Station, SW1V **Nearest Tube:** Victoria



WINDSOR CASTLE, STONEHENGE AND BATH TOUR

Be amongst the first people to enter Windsor Castle; see Runnymede where the Magna Carta was signed in 1215. Soak up the charming atmosphere of your traditional pub lunch (included in the price Nov-Mar); unlock the secrets of Stonehenge; enjoy the beautiful Georgian city of Bath, followed by time to shop and explore (Roman Baths Entry included Apr-Oct.)

SCHEDULE: Duration 12 hours. Departures daily, with some exceptions.

DEPARTS: Premium Tours, Victoria Coach Station, SW1V **Nearest Tube:** Victoria

